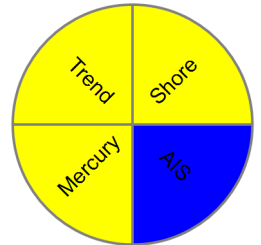


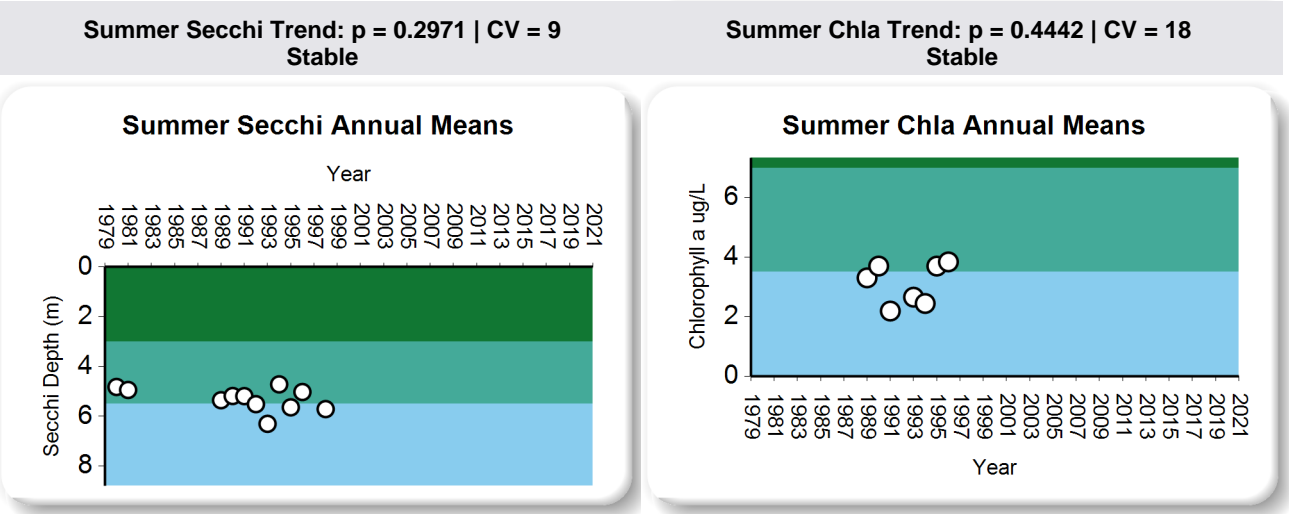
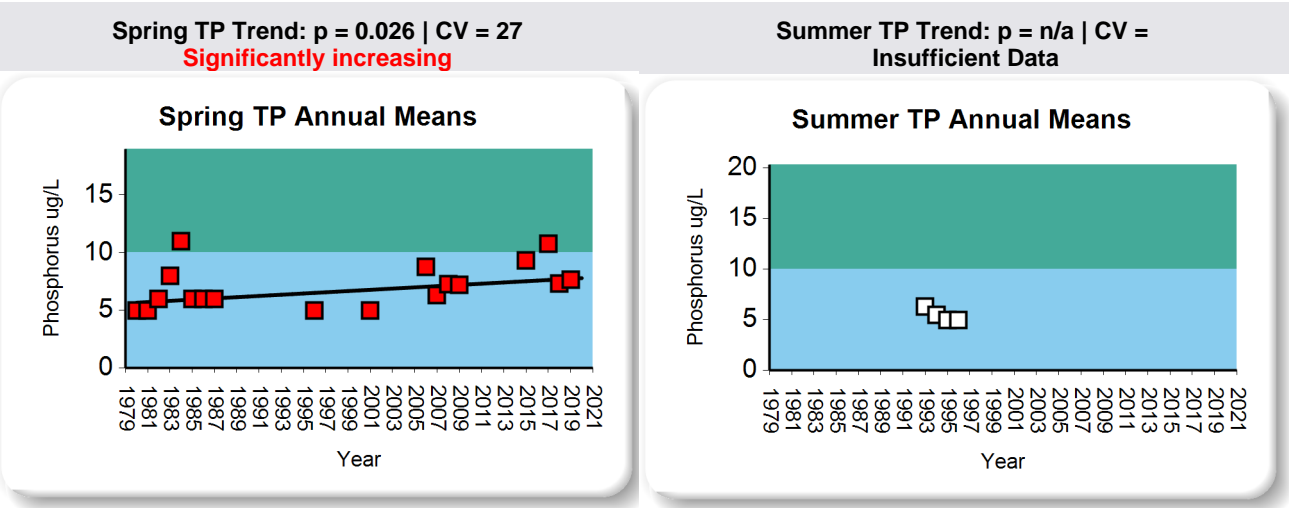
# GREAT AVERILL - data through 2020

[Learn How Lakes Are Scored](#)

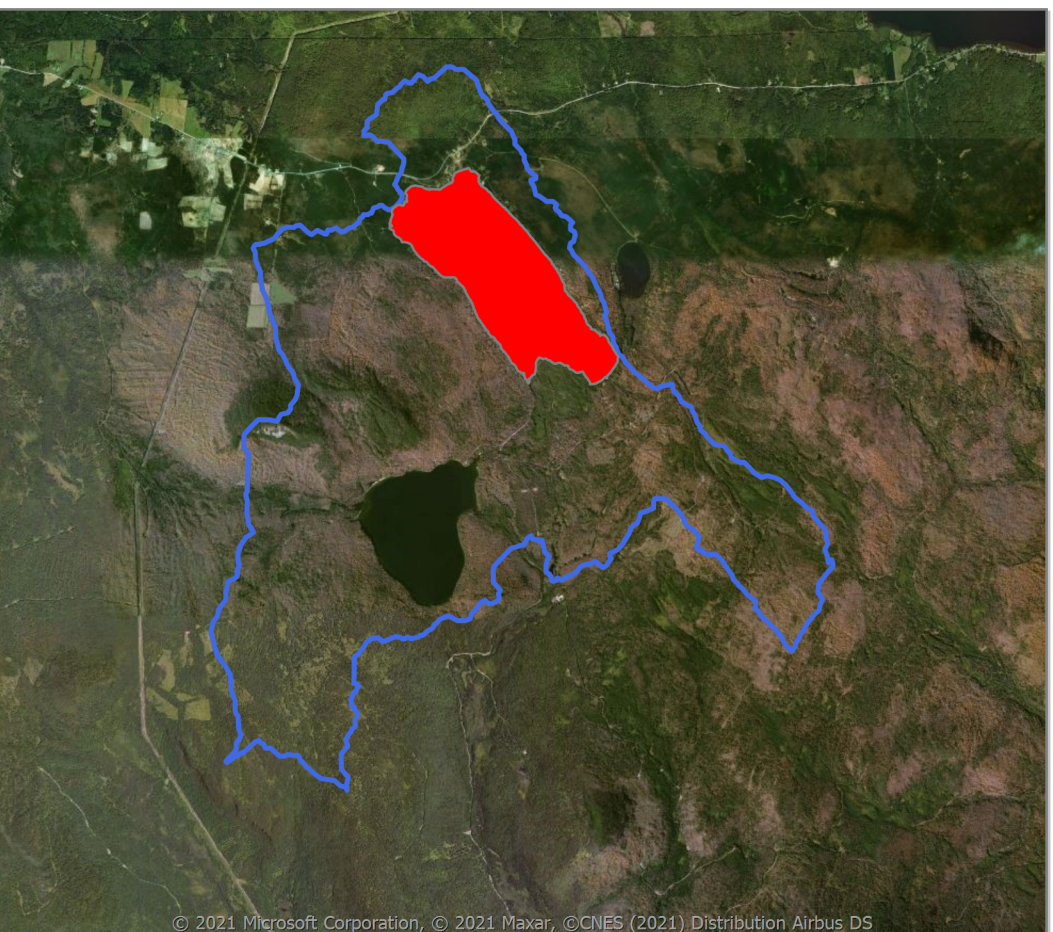


Lake Area: 835 acres  
 Basin Lake Area Ratio: 9  
 Max Depth: 32.9 meters  
 Mean Spring TP: 7.1 ug/L  
 Mean Summer TP: 5.5 ug/L  
 Mean Summer Chla: 3.2 ug/L  
 Mean Summer Secchi: 5.3 meters

**Hypereutrophic**  
**Eutrophic**  
**Mesotrophic**  
**Oligotrophic**



**Trend Score:** Fair  
**WQ Standards Status:** Altered  
**Watershed Score:** Minimally Disturbed



**Stresses / Impairments**

Altered -- Flow alteration  
 Stressed -- pH

© 2021 Microsoft Corporation, © 2021 Maxar, ©CNES (2021) Distribution Airbus DS