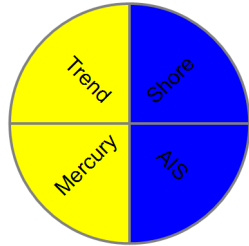


LITTLE AVERILL - data through 2020

[Learn How Lakes Are Scored](#)



Lake Area:
470.2 acres

Basin Lake Area Ratio:
6

Max Depth:
35.1 meters

Mean Spring TP:
6.7 ug/L

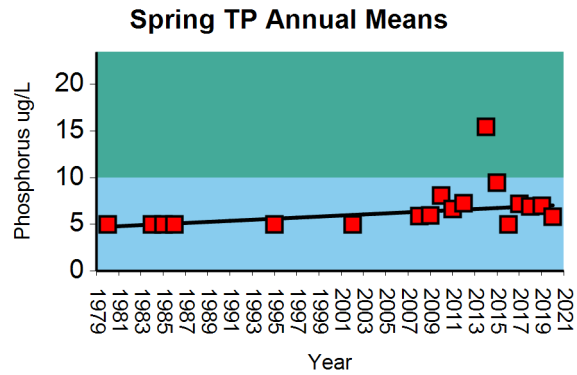
Mean Summer TP:

Mean Summer Chla:

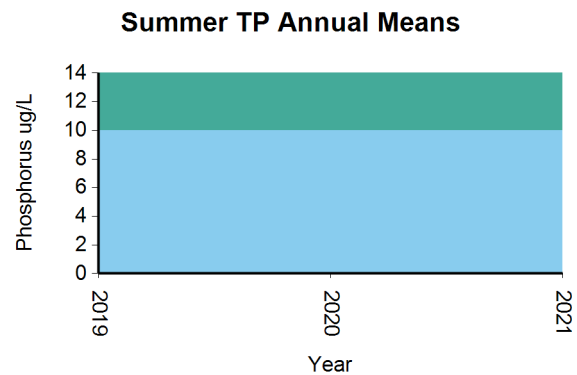
Mean Summer Secchi:



Spring TP Trend: $p = 0.0136$ | $CV = 38$
Significantly increasing



Summer TP Trend: $p = n/a$ | $CV =$
Insufficient Data

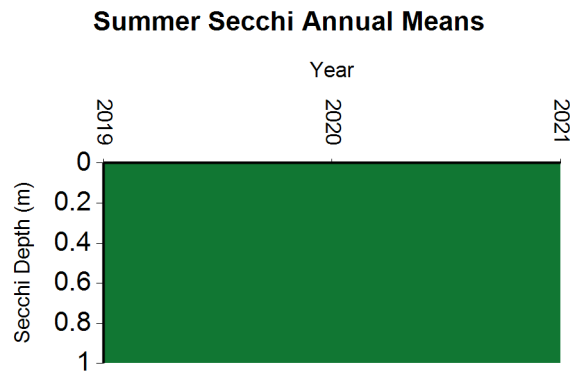


Trend Score: **Fair**

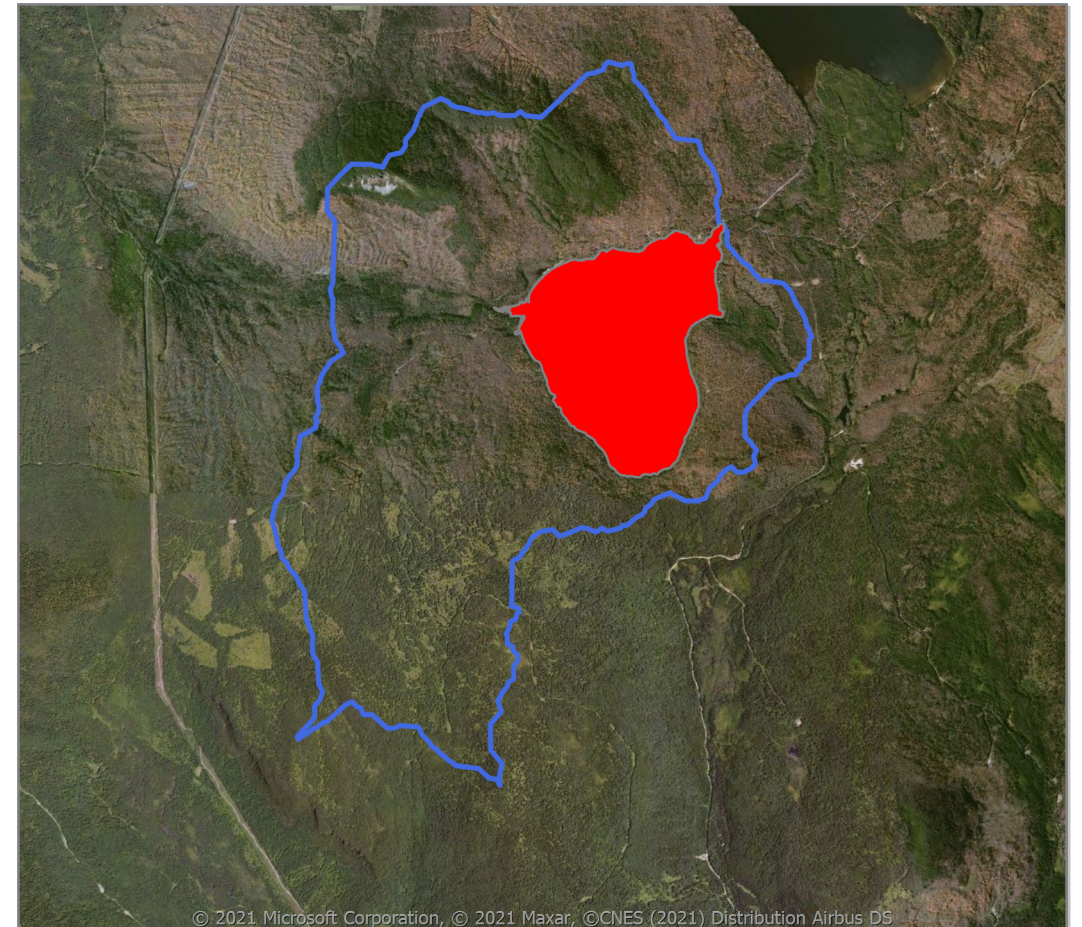
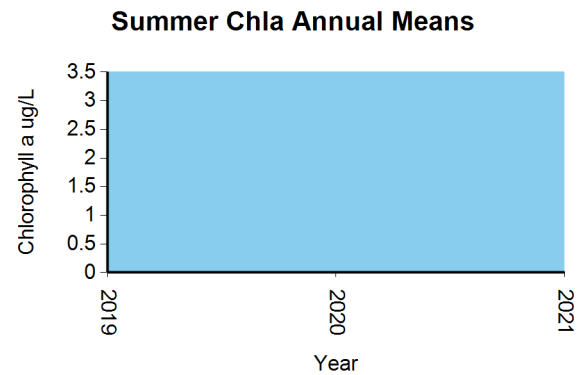
WQ Standards Status: **Altered**

Watershed Score: **Minimally Disturbed**

Summer Secchi Trend: $p = n/a$ | $CV =$
Insufficient Data



Summer Chla Trend: $p = n/a$ | $CV =$
Insufficient Data



Stresses / Impairments

Altered -- Flow alteration

Stressed -- pH